

# STS DRIVE LININGS – ALWAYS RELY ON PROVEN TECHNOLOGY!

## STS 2010

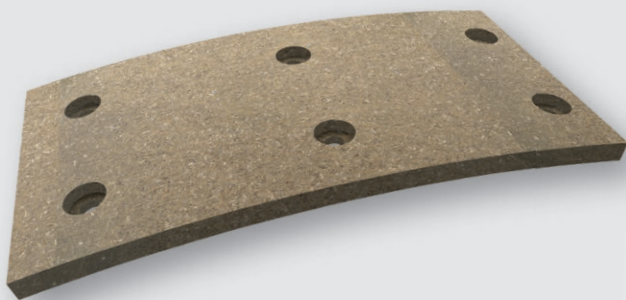
Since many years **STS 2010** is amongst the guaranors for a safe and efficient operation of continuous presses in the **wood based panel industry**. **STS 2010** stands out for:

- Excellent coefficient of friction
- Best band control
- Very good material strength under thermal load
- Extremely durable

**STS 2010** makes a crucial contribution to a highly efficient and trouble-free operation of your facility.

	STS 2010
Coefficient of friction, dry	0.40 $\mu$
Coefficient of friction, oiled	0.12 $\mu$
Max. operating temperature	200°C
Compressive Strength 200°C	160 N/mm <sup>2</sup>

**NEW!**  
Now with optional grooving.



**Please contact us directly to receive our best offer!**

Phone: +49 2841-998 89 80 | E-mail: [info@sts-friction.com](mailto:info@sts-friction.com)

[www.sts-friction.com](http://www.sts-friction.com)

SINCE MORE THAN 25 YEARS –  
TOP QUALITY MADE IN MOERS (GERMANY)

